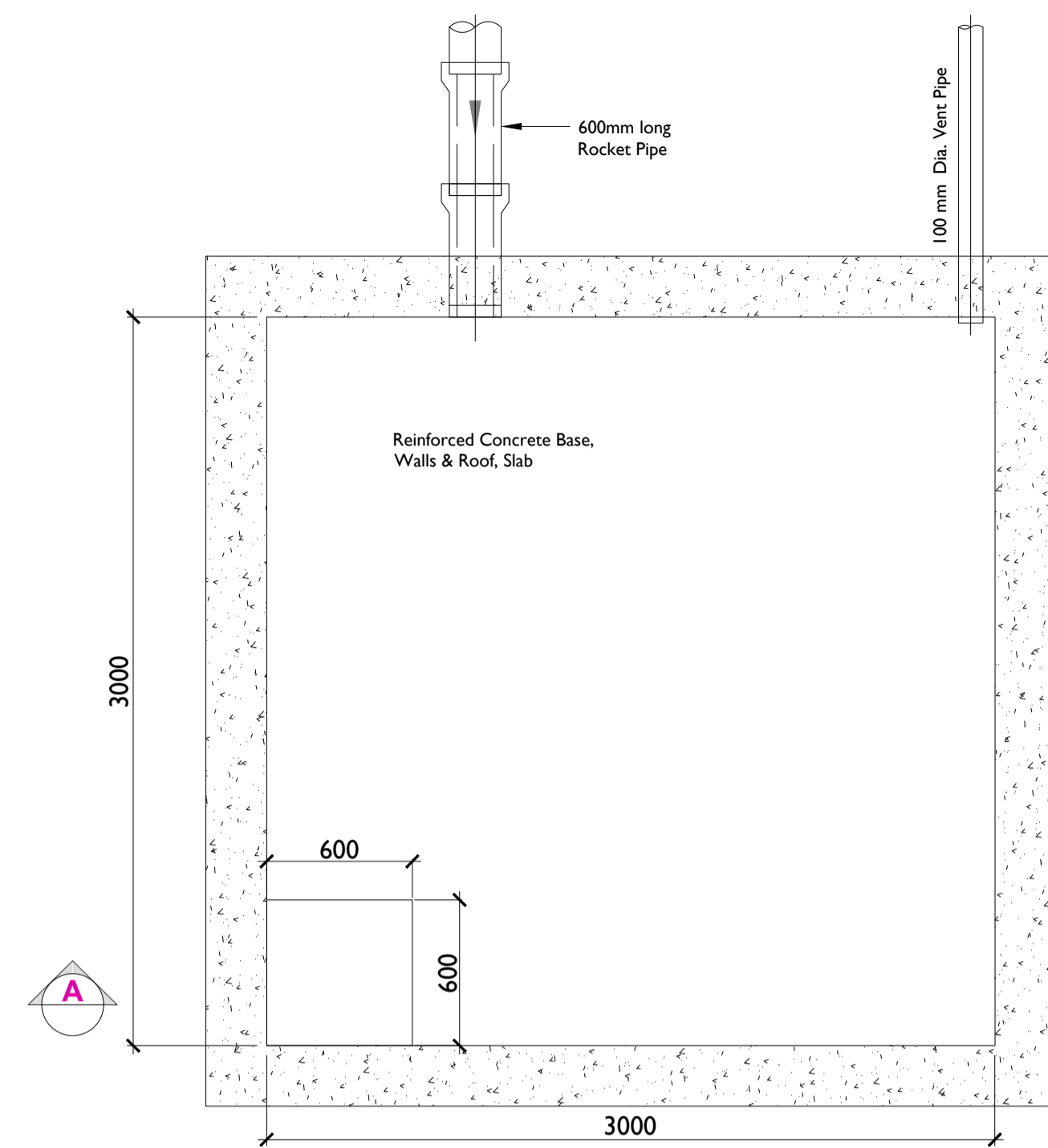
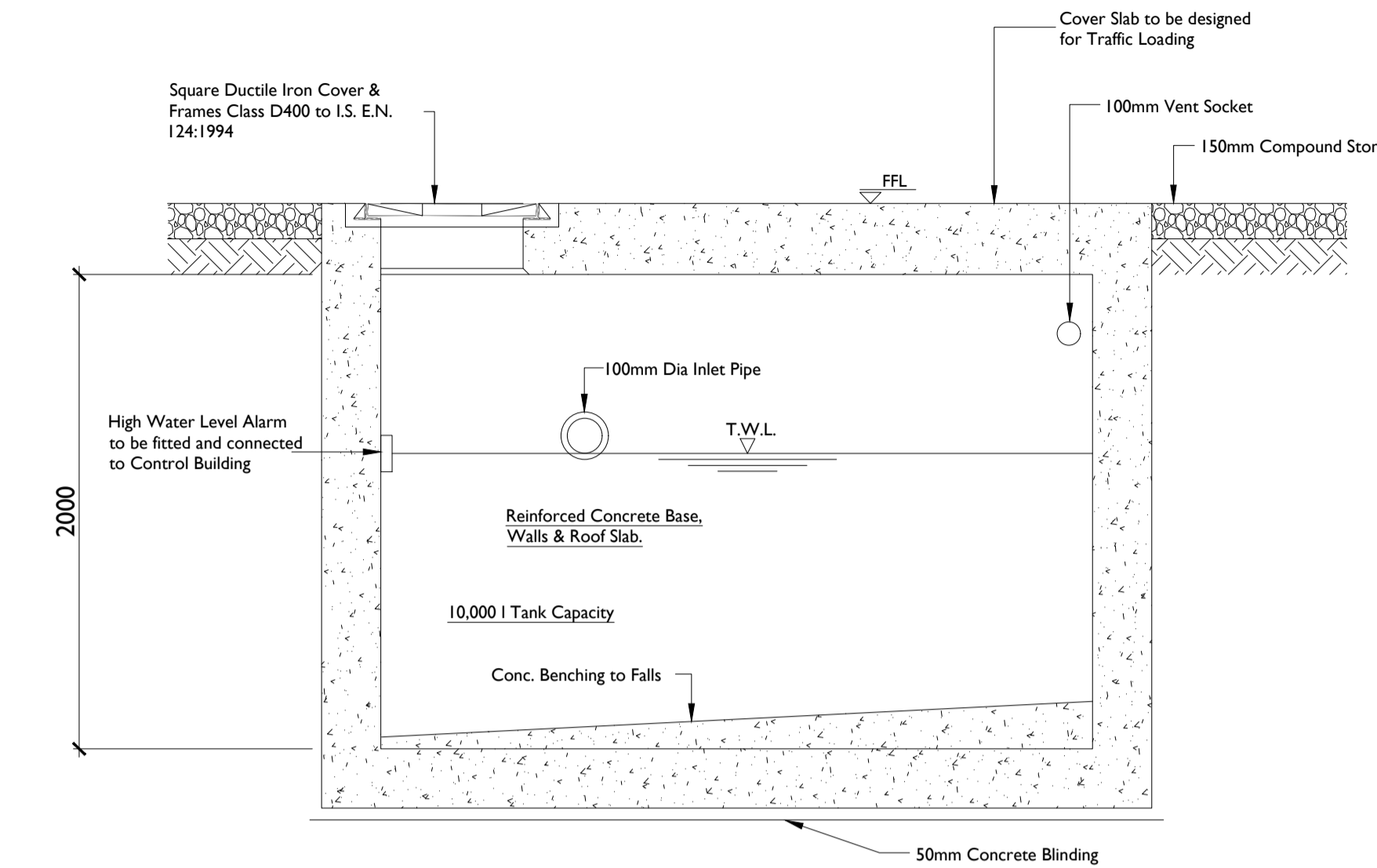


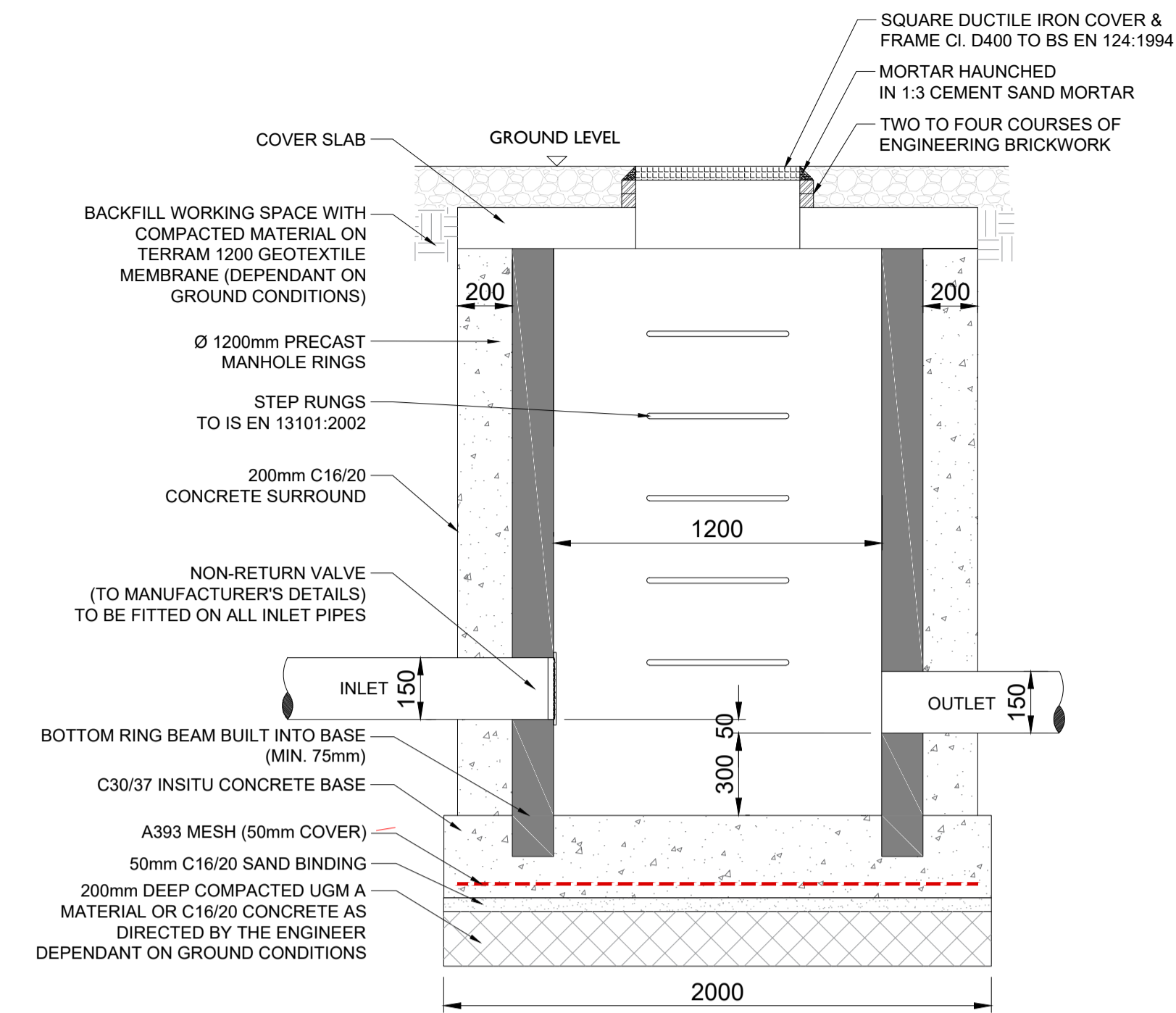
ISO A1 594mm x 841mm



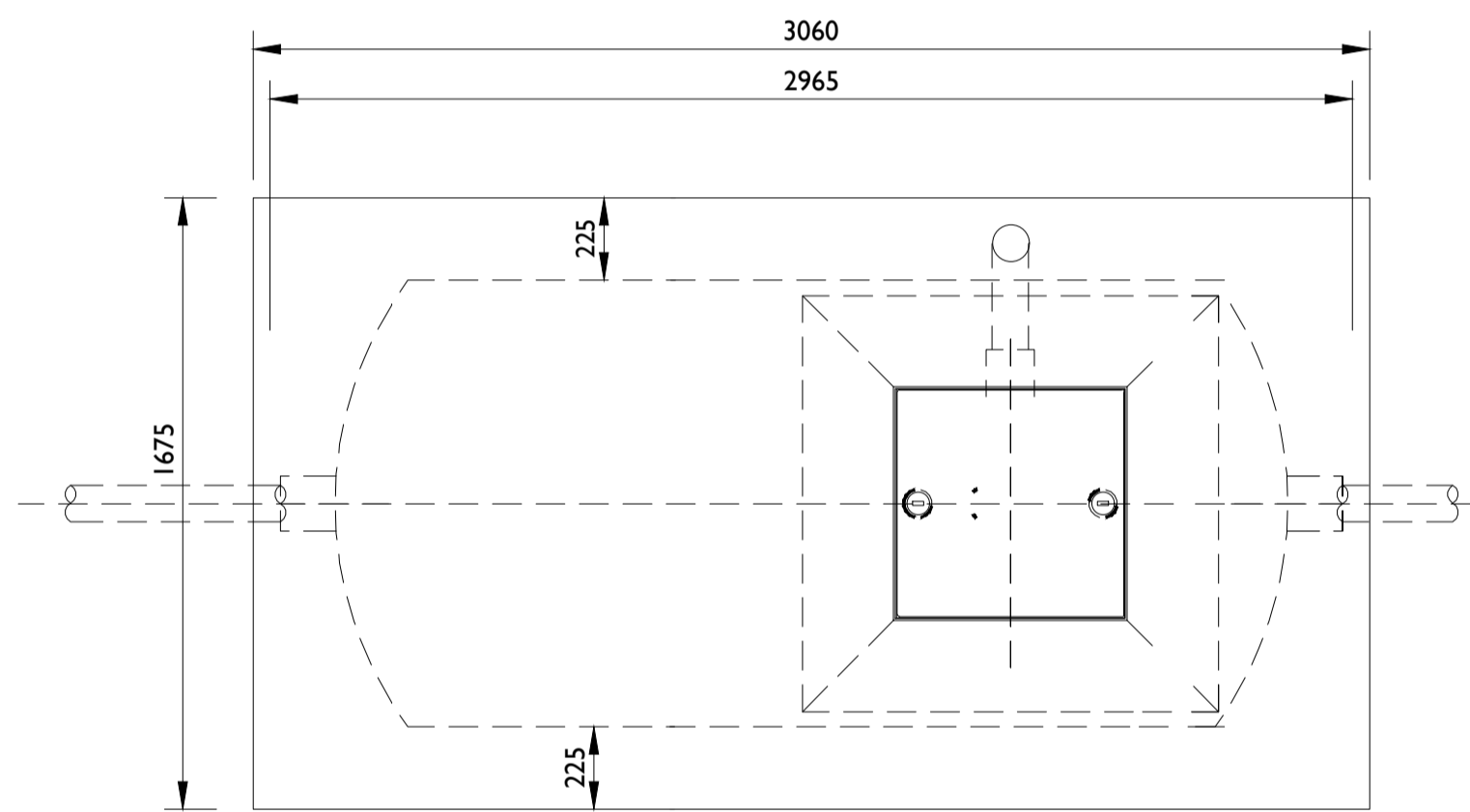
TYPICAL FOUL WATER HOLDING TANK
SCALE 1:25



TYPICAL FOUL WATER HOLDING TANK - SECTION A-A
SCALE 1:25



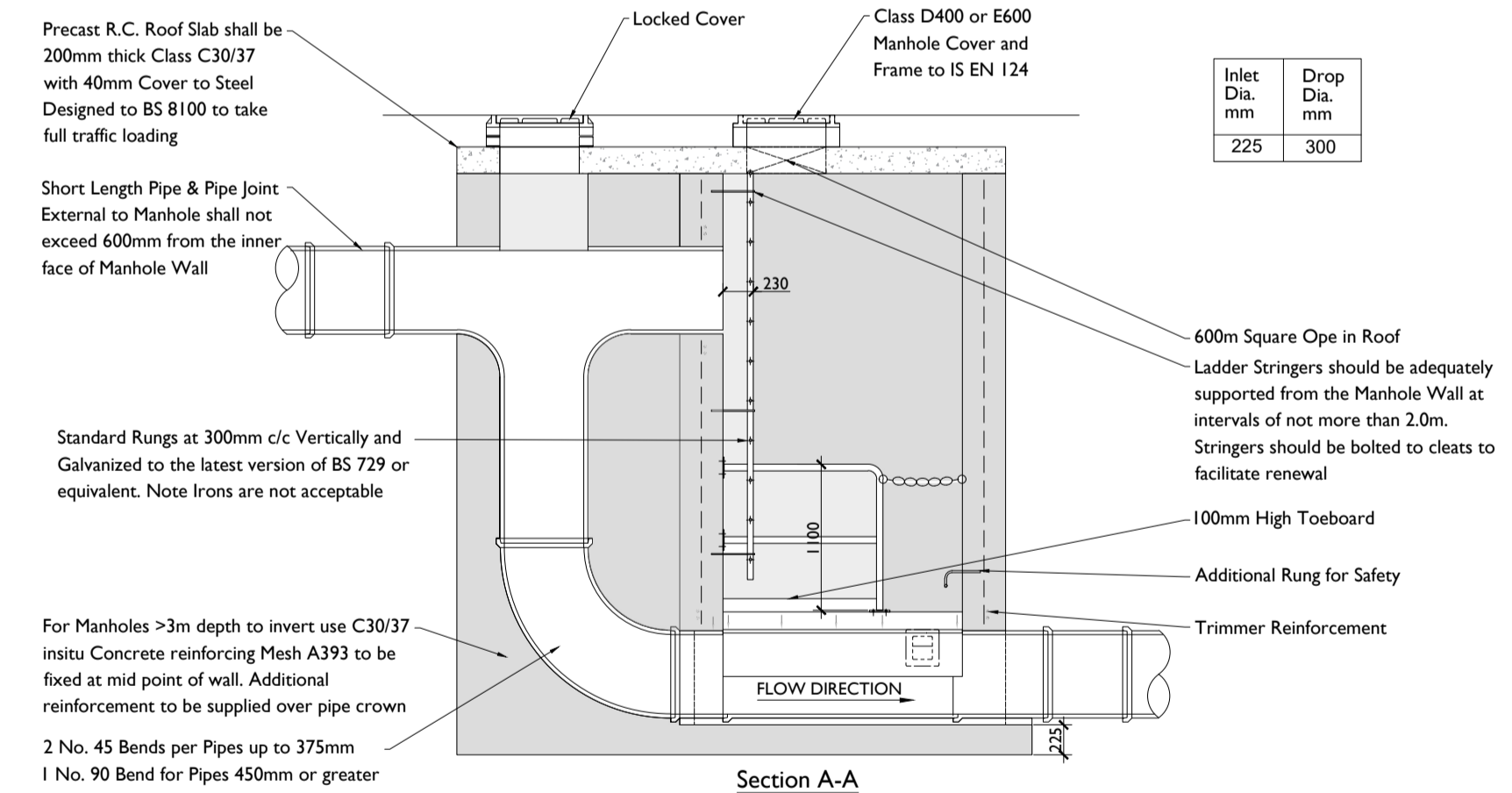
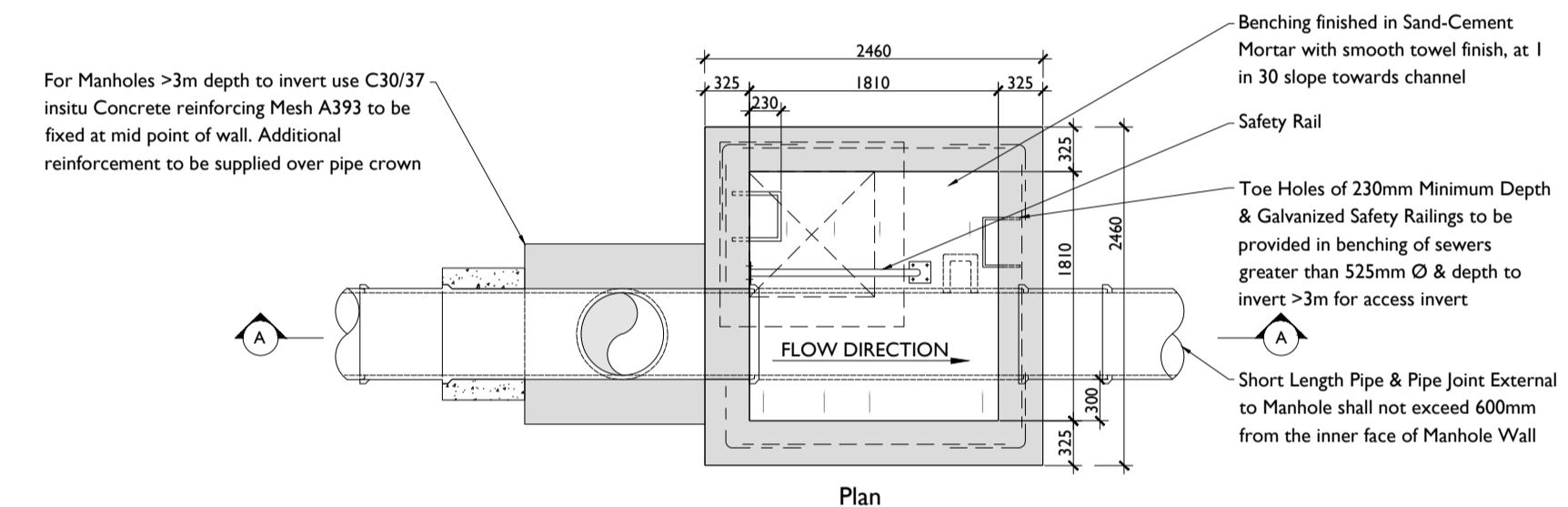
SILT TRENCH ELEVATION DETAIL
SCALE 1:20



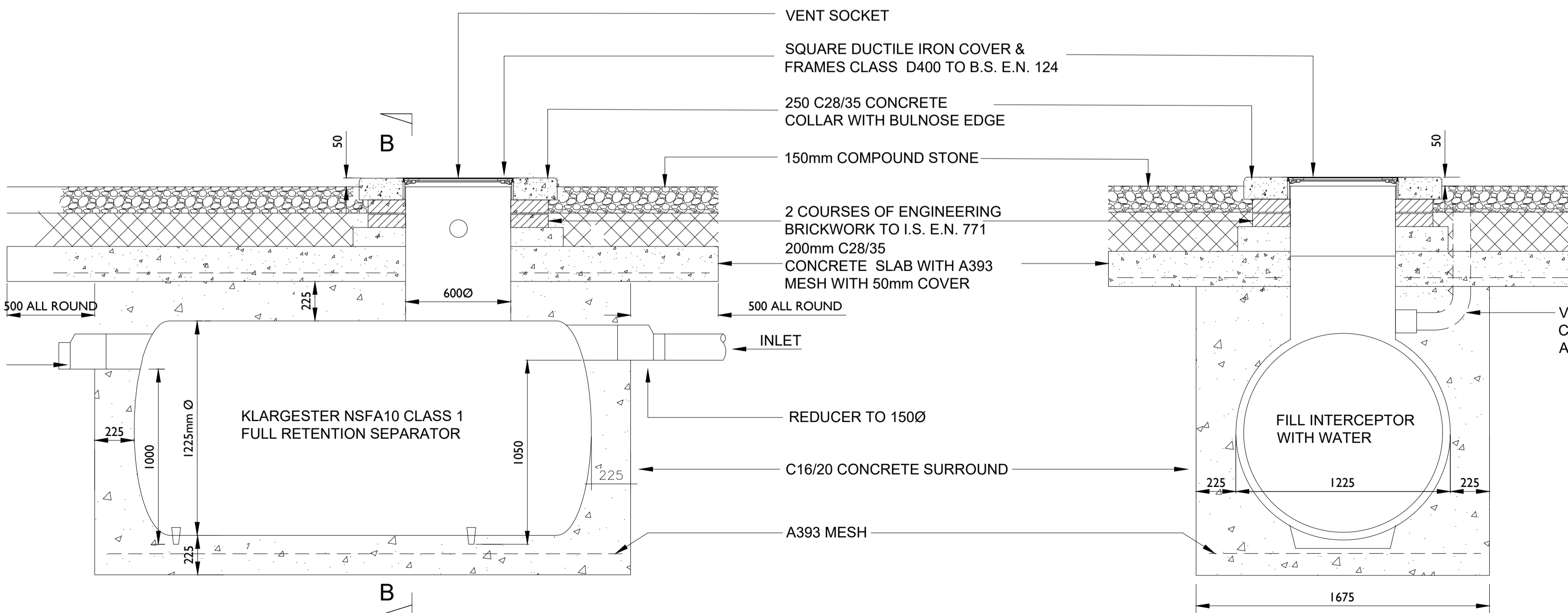
OIL INTERCEPTOR DETAIL - PLAN VIEW
SCALE 1:20

UNIT REF NO.	NOMINAL FLOW	DIM L (mm)	APPROX. EMPTY WEIGHT (kg)	FALL ACROSS UNIT
NSFA010	10 L/s	2610	130	50

- CONSTRUCTION NOTES:**
- FILL SEPARATOR WITH WATER AFTER INSTALLATION AND BEFORE BACKFILLING.
 - FOLLOW MANUFACTURERS INSTALLATION INSTRUCTIONS.
 - FIRST TWO PIPES ON EACH RUN TO HAVE FLEXIBLE JOINTS.
 - SEPARATOR TO BE VENTED & FITTED WITH CAP AT GROUND LEVEL.



BACKDROP MANHOLE - TYPICAL DETAIL
SCALE 1:20



OIL INTERCEPTOR DETAIL - SECTION A-A
SCALE 1:20

OIL INTERCEPTOR DETAIL - SECTION B-B
SCALE 1:20



Head Office
Beenleigh,
Abbeydonney,
Tralee, Co. Kerry
Ireland
Tel: 00353 66 7135710

Regional Office
Basepoint Business Centre
Stroudley Road, Basingstoke,
Hampshire,
RG24 8UP, UK
Tel: 00 44 1256406664

PROJECT
Coom Green Energy Park
110kV Grid Connection

CLIENT
Coom Green Energy
Park Limited

CONSULTANTS



- NOTES:**
- This drawing is to be read in conjunction with relevant drawings, specifications and reports.
 - Dimensions are in millimeters, unless noted otherwise.
 - Drawings are not to be scaled use figured dimensions only.

LEGEND:

Issued for Planning
29.10.2025

ISSUE/REVISION	DATE	DESCRIPTION
P1	29.10.25	Issued for Planning
N1	02.04.25	Issued for Information
I/R	DATE	DESCRIPTION

PROJECT NUMBER
300-100920

SHEET TITLE
Drainage Details
Sheet 2 of 3

SHEET NUMBER
300100920-DR-218

Project Management Initials: Designer: BM Checked: LC Approved: DT